

# Community Engagement

*For Full-Time Undergraduate Students*

# COMMUNITY ENGAGEMENT IN SUSS

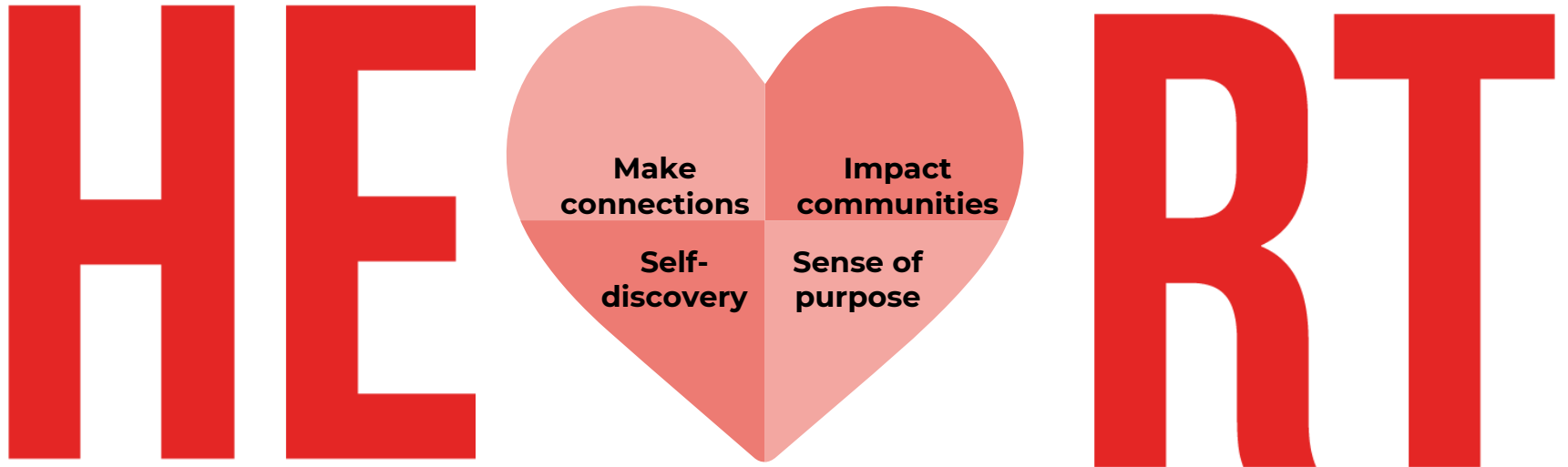
## *What is CE?*

An **educational experience** through which students learn and develop through **active participation in thoughtfully-organised service** experiences that meet community priorities, and are coordinated in collaboration with the university and community.

A **signature component** of SUSS undergraduate programme, one of the five **experiential graduation requirements** for students, and contributes to SUSS's educational philosophy of **Head, Heart and Habit**.

# COMMUNITY ENGAGEMENT IN SUSS

*What do I get out of doing CE?*



# THE ABCD OF COMMUNITY ENGAGEMENT

*More than just Asset-Based Community Development*

A

Access CE100

B

Build meaningful  
engagement

C

Consult mentors

D

Dig deep and  
discover

# THE ABCD OF COMMUNITY ENGAGEMENT

Access the CE100 module on Canvas to:



learn the foundations of community engagement



find instructions and the relevant documents/forms for submission at the various stages of your CE journey



know the CE fulfilment requirements

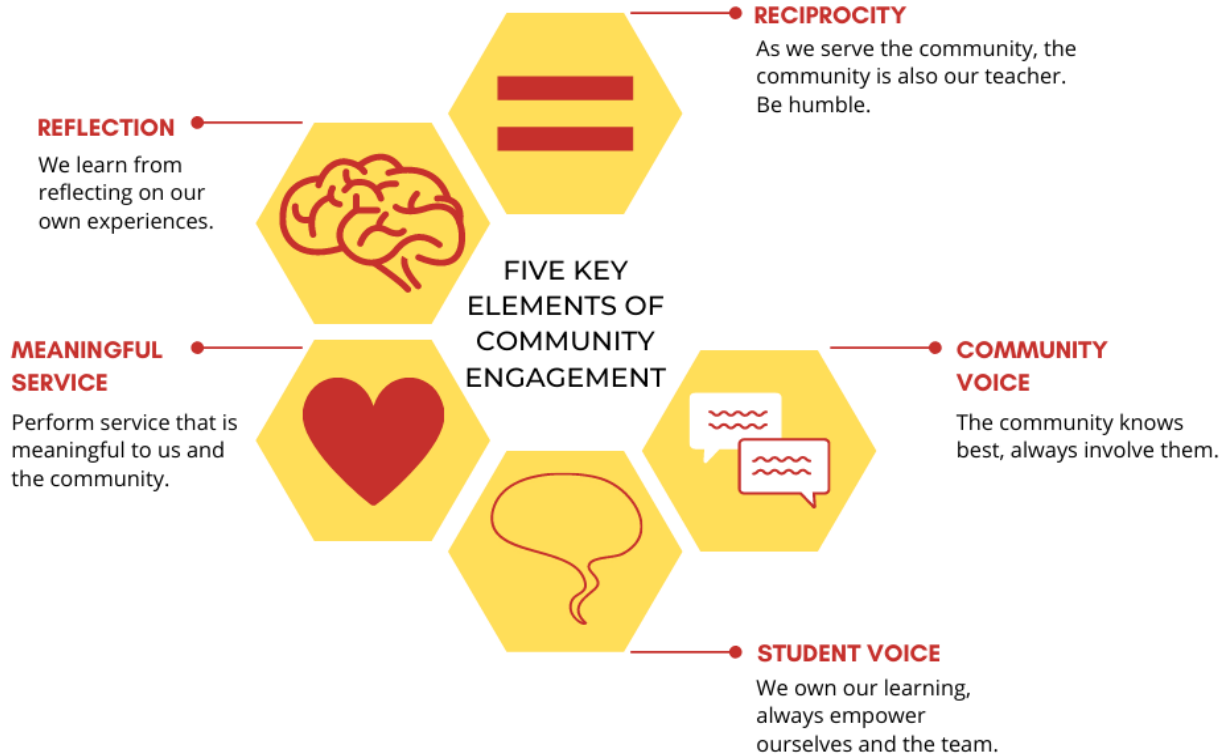


get latest CE opportunities and updates from OSLCE

A screenshot of a Canvas LMS dashboard. On the left is a dark sidebar with navigation icons for Account, Dashboard, Courses, Calendar, Inbox, History, and Commons. The main content area is titled 'Dashboard' and shows 'Published Courses (1)'. A course card is displayed with a blue header and a yellow graphic that says 'WELCOME TO CE100' and 'FOUNDATIONS OF COMMUNITY ENGAGEMENT'. Below the graphic, the course title 'CE100/2022: FOUNDATIONS OF ...' and 'CE100/2022' are visible, along with a document icon.

# THE ABCD OF COMMUNITY ENGAGEMENT

*Build meaningful engagement by incorporating the 5 key elements of CE.*



# THE ABCD OF COMMUNITY ENGAGEMENT

*Contact OSLCE staff if you require:*



General consultation about the CE programme



Advice, feedback and/or guidance for your project



Logistical support or specific skill-based learning opportunities to support you in your CE journey

# THE ABCD OF COMMUNITY ENGAGEMENT

## Cohort Coordinators and OSLCE Staff



**CYNTHIA CHANG**

*Head*



**EMMELYN KOH**

*Executive*



**JASON NG**

*Specialist*



**THAVAMALAR  
BALAKRISHNAN**

*Deputy Head*



**CHIA MING HUEI**

*Specialist*



**LEE SIEW LING**

*Specialist*



**TEO QI YU**

*Senior Executive*



**PAMELA LOH**

*Specialist*

↳ your cohort  
co-ordinators 😊



# THE ABCD OF COMMUNITY ENGAGEMENT

*Consult your Community Partner Mentor to:*



Obtain insights on the community's priorities



Agree on the scope of engagement before starting the CE initiative and get endorsement from the CP organisation



Get guidance and advice on matters relating to the CE project

# THE ABCD OF COMMUNITY ENGAGEMENT

*Dig deep and discover opportunities to contribute meaningfully to the community.*



# RESOURCES

Access service-learning resources through the National Service-Learning Clearinghouse.

SUSS SINGAPORE UNIVERSITY OF SOCIAL SCIENCES

Current Students Alumni Associates Blog & Podcast News & Events Giving Library Careers Contact Us Log In Bookmarks (0)

About SUSS CET Courses Part-time Undergraduate Full-time Undergraduate Graduate Studies Law Programmes Experience at SUSS Partnerships

132 Result(s)

Search [input] [magnifying glass]

Sort By: Most recent

View as [grid icon]

Content

- Books and Publications
- Journal Articles
- Policies / Reports
- Conference Proceedings
- Media Releases / Speeches
- Factsheet / Infographic
- Videos / Multimedia Resources
- Projects / Collaborations
- Toolkits / Templates

Issue Area

Institution Type

Service Types

CLEAR FILTER

**SUSS Service-Learning Sectors: Children & Youth**  
One of the sectors by SUSS's Office of Service-Learning and Community Engagement.  
FIND OUT MORE >

**SUSS Service-Learning Sectors: Health & Wellbeing**  
One of the sectors by SUSS's Office of Service-Learning and Community Engagement.  
FIND OUT MORE >

**SUSS Service-Learning Sectors: Environment & Sustainability**  
One of the sectors by SUSS's Office of Service-Learning and Community Engagement.  
FIND OUT MORE >

**SUSS Service-Learning Sectors: Diversity & Inclusion**  
One of the sectors by SUSS's Office of Service-Learning and Community Engagement.  
FIND OUT MORE >

**SUSS Service-Learning Sectors: Ageing & Elderly**  
One of the sectors by SUSS's Office of Service-Learning and Community Engagement.  
FIND OUT MORE >

**SUSS Service-Learning Sectors: Community Building**  
One of the sectors by SUSS's Office of Service-Learning and Community Engagement.  
FIND OUT MORE >

- A publicly available digital repository for Service-Learning research, policies, pedagogies and programmes in Singapore
- Serves as a community resource for professional development and advancement of service-learning practices



[suss.edu.sg/slclearinghouse](https://suss.edu.sg/slclearinghouse)

# FUNDS & GRANTS

*Apply for funding support to carry out your community engagement initiatives.*



- **North West CDC WeCare Fund**  
For ground-up projects and programmes that benefit the North West community
- **Community Engagement Fund**  
For community projects aligned with 5 key elements of community engagement; that demonstrate impact and sustainability

# AWARDS

*Celebrating students with character strength and who have made positive community impact.*



- **Spirit Award**  
For students who exemplify 'Heart' in our educational philosophy of 'Head, Heart and Habit'.
- **Community Engagement Award**  
Celebrates student active engagement in community engagement and advocacy leadership.
- **Provost 3H Fund – Community Impact Award**  
Honours the social/community impact of SUSS student(s) collaborative efforts

# CONTACT US

*Stay connected.*



osl@suss.edu.sg



<http://www.suss.edu.sg/oslce>