

Community Engagement

For Part-Time Programme Students

SUSS VISION AND CORE VALUES

How can you make your mark in the community with SUSS?

Vision



Core Values



Learning as a lifelong pursuit of knowledge that benefits you and others. Combined with a **Passion for Community**, knowledge enables us to make a positive, lasting difference in people's lives.

COMMUNITY ENGAGEMENT IN SUSS

What is CE?

An educational experience through which students learn and develop through active participation in thoughtfully-organised service experiences that meet actual community needs, and are coordinated in collaboration with the university and community.

Contributes to SUSS's educational philosophy of Head, Heart and Habit.

OSLCE VALUE PROPOSITION

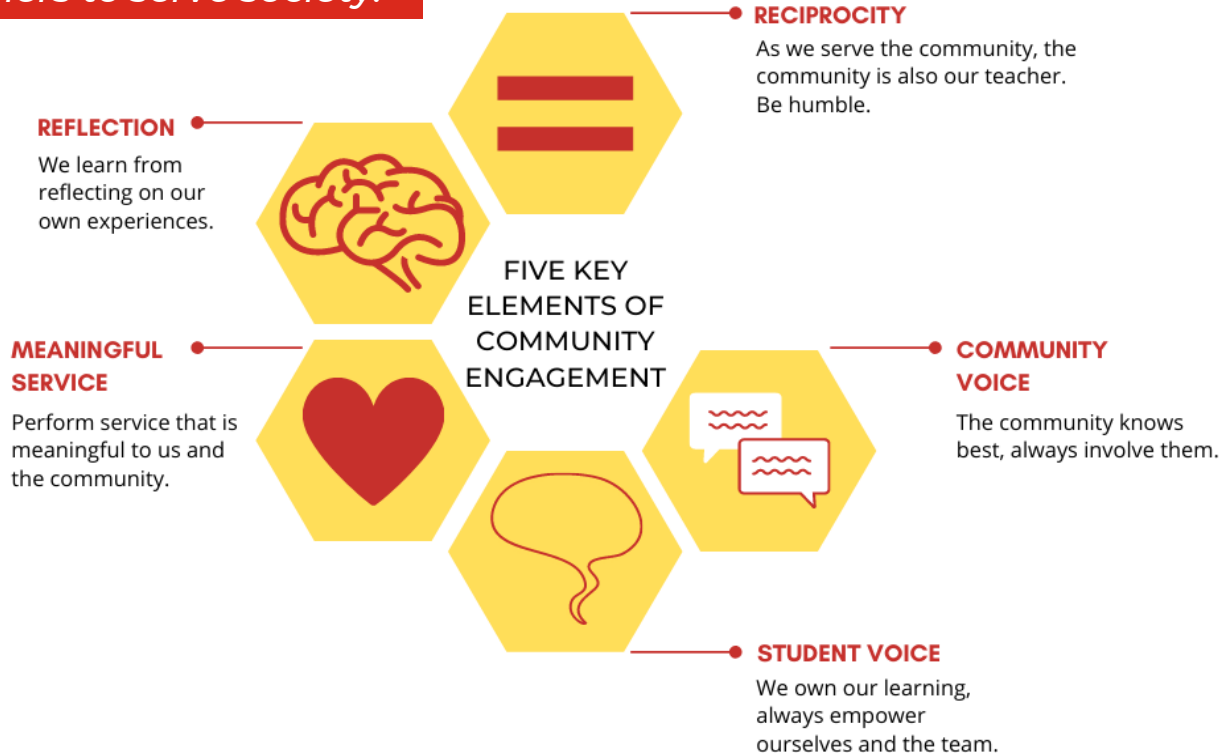
Why do Community Engagement with OSLCE?

Programme
Design &
Theoretical
Underpinnings

OSLCE

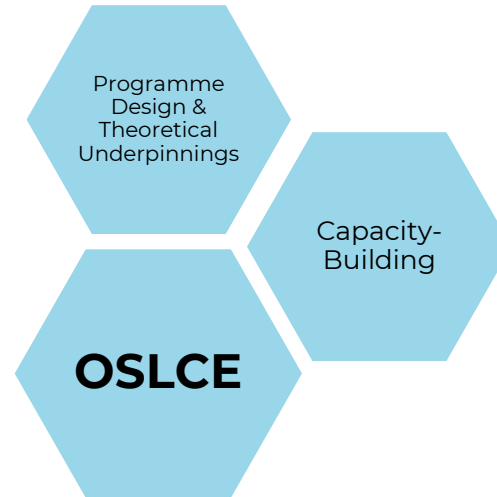
PROGRAMME DESIGN & THEORETICAL UNDERPINNINGS

Equipping learners to serve society.



OSLCE VALUE PROPOSITION

Why do Community Engagement with OSLCE?



CAPACITY BUILDING

Available options to help develop knowledge and skills relevant for community engagement.

CE102

Learn the basics

Access CE102 on Canvas to learn the foundation of community engagement and on managing a community engagement project

*Course is ungraded but those who successfully complete it will receive a Certificate of Attendance

Develop competencies

On demand capacity-building workshops to support and better prepare students for their SL/CE journey

OCE165
VOLUNTEER RESOURCE
MANAGEMENT



Credit-bearing electives

A 2.5 CU course on managing volunteer resources as a strategic and operational responsibility in the people sector

*Those who successfully complete the course can also apply to be a VM Fellow

For more information: bit.ly/suss_oce165

Be a VM fellow

Explore VM as a potential career option through VM internship opportunities as well as build experience and connections to related employment opportunities

VOLUNTEER
MANAGEMENT
FELLOWSHIP



For more information: hyperurl.co/oslce_vmf



OSLCE VALUE PROPOSITION

Why do Community Engagement with OSLCE?



COMMUNITY ENGAGEMENT PATHWAYS

Dig deep and discover opportunities to contribute meaningfully to the community.



OSLCE VALUE PROPOSITION

Why do Community Engagement with OSLCE?



COMMUNITY PARTNERSHIPS

Tap on our existing community network.

Projects

**Community
Partners**

Cumulative figures since 2014

713

224

Active numbers as of Mar 2022

79

62

OSLCE VALUE PROPOSITION

Why do Community Engagement with OSLCE?



RESOURCES

Access service-learning resources through the National Service-Learning Clearinghouse.

SUSS SINGAPORE UNIVERSITY OF SOCIAL SCIENCES

Current Students Alumni Associates Blog & Podcast News & Events Giving Library Careers Contact Us Log In Bookmarks (0)

About SUSS CET Courses Part-time Undergraduate Full-time Undergraduate Graduate Studies Law Programmes Experience at SUSS Partnerships

132 Result(s)

Search

Sort By: Most recent

View as

Content

- Books and Publications
- Journal Articles
- Policies / Reports
- Conference Proceedings
- Media Releases / Speeches
- Factsheet / Infographic
- Videos / Multimedia Resources
- Projects / Collaborations
- Toolkits / Templates

Issue Area

Institution Type

Service Types

CLEAR FILTER

SUSS Service-Learning Sectors: Children & Youth

One of the sectors by SUSS's Office of Service-Learning and Community Engagement.

FIND OUT MORE >

SUSS Service-Learning Sectors: Health & Wellbeing

One of the sectors by SUSS's Office of Service-Learning and Community Engagement.

FIND OUT MORE >

SUSS Service-Learning Sectors: Environment & Sustainability

One of the sectors by SUSS's Office of Service-Learning and Community Engagement.

FIND OUT MORE >

SUSS Service-Learning Sectors: Diversity & Inclusion

One of the sectors by SUSS's Office of Service-Learning and Community Engagement.

FIND OUT MORE >

SUSS Service-Learning Sectors: Ageing & Elderly

One of the sectors by SUSS's Office of Service-Learning and Community Engagement.

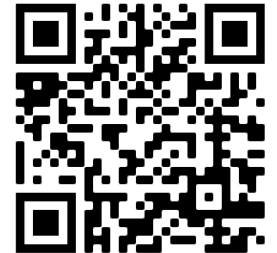
FIND OUT MORE >

SUSS Service-Learning Sectors: Community Building

One of the sectors by SUSS's Office of Service-Learning and Community Engagement.

FIND OUT MORE >

- A publicly available digital repository for Service-Learning research, policies, pedagogies and programmes in Singapore
- Serves as a community resource for professional development and advancement of service-learning practices



FUNDS & GRANTS

Available funding support for your Community Engagement initiatives.



North West CDC WeCare Fund

For ground-up projects and programmes that benefit the North West community



BinjaiTree Community Engagement Fund*

For community projects aligned with 5 key elements of community engagement; that demonstrate impact and sustainability

**Project Leader must be an SUSS Full-Time student*

OSLCE VALUE PROPOSITION

Why do Community Engagement with OSLCE?



AWARDS

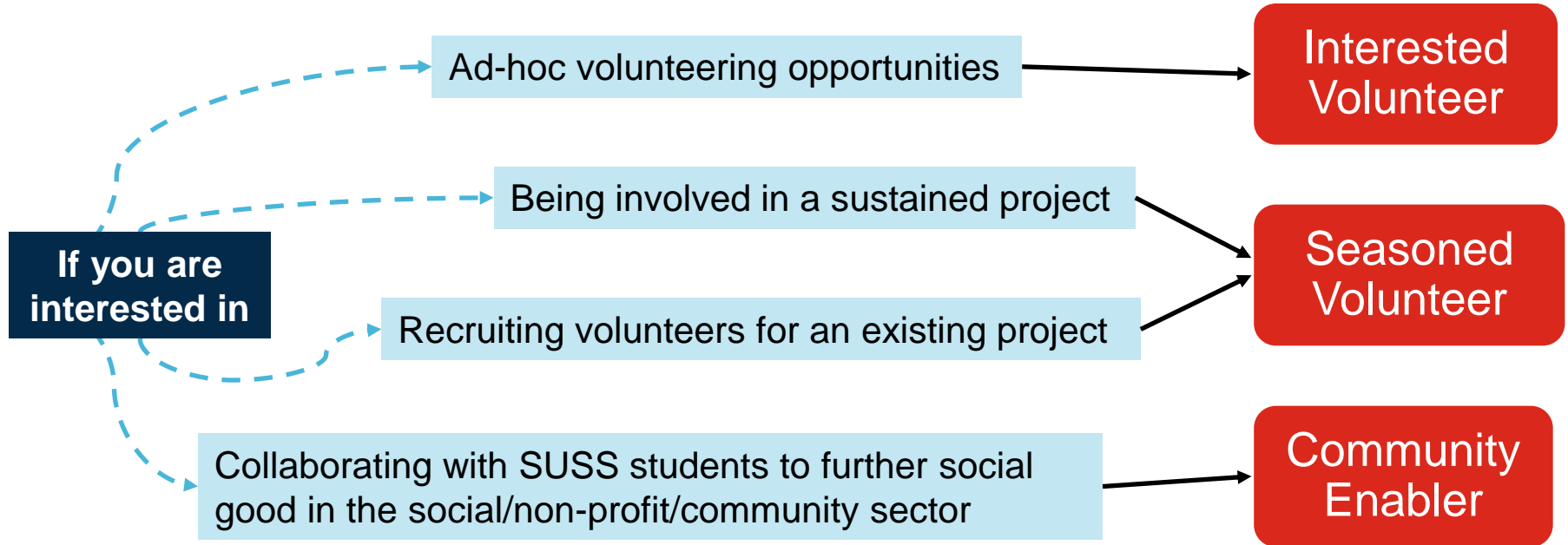
Celebrating students with character strength and who have made positive community impact.



- **Spirit Award**
For students who exemplify 'Heart' in our educational philosophy of 'Head, Heart and Habit'.
- **Community Engagement Award**
Celebrates student active engagement in community engagement and advocacy leadership.
- **Provost 3H Fund – Community Impact Award**
Honours the social/community impact of SUSS student(s) collaborative efforts

FLEXIBLE WAYS TO BE INVOLVED

Find the right fit with us.



SENSING THE GROUND

What type of volunteer are you?

I am interested to engage the community through:

a	Ad-hoc volunteering opportunities – [Interested Volunteer]	b	Being involved in a sustained project – [Seasoned Volunteer]
c	Recruiting volunteers for an existing project I am involved in – [Seasoned Volunteer]	d	Collaborating with our students to further social good in the social/non-profit/community sector – [Community Enabler]

2A

Interested Volunteer

Ad-hoc volunteering opportunities



Certificate of Participation

2B

Seasoned Volunteer

Being involved in a sustained project
OR

Recruiting volunteers for an existing project



Certificate of Completion

HOW MIGHT
YOUR CE
JOURNEY
LOOK LIKE?

1

Interested Student

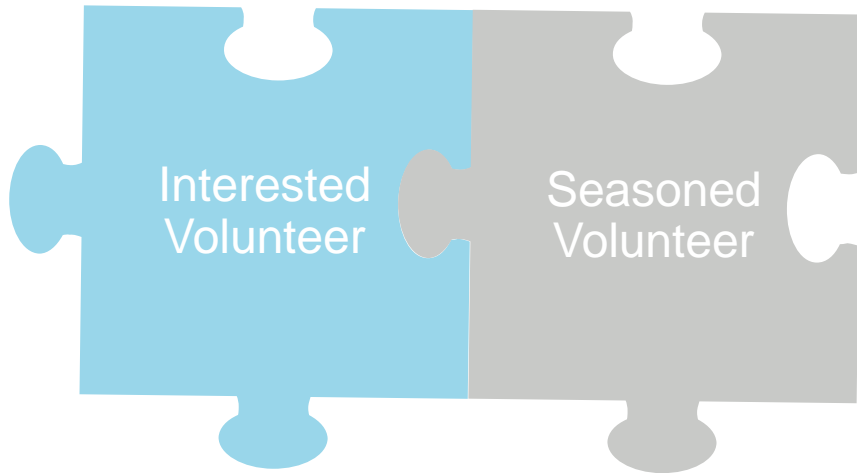
Complete CE102 Module on Canvas



Certificate of Attendance

WAYS TO BE INVOLVED

Find the right fit with us.

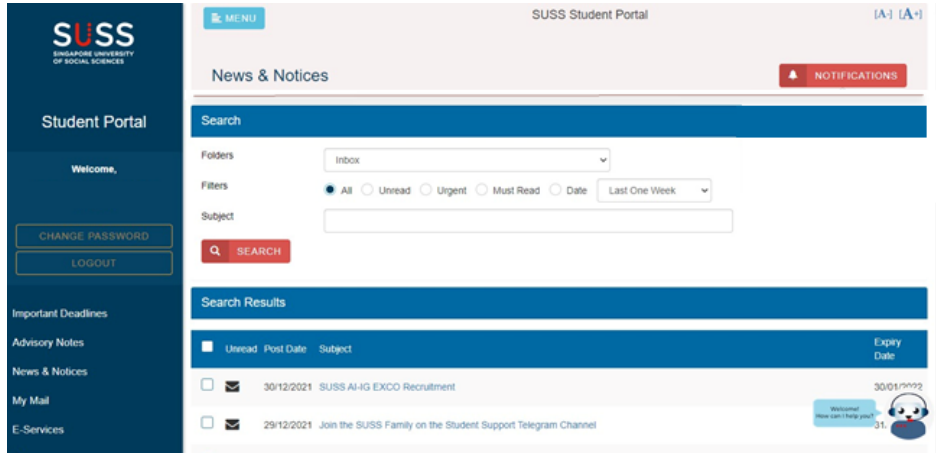


INTERESTED & SEASONED VOLUNTEER

Looking for ad-hoc or sustained volunteering opportunities?

Keep a lookout for available community engagement opportunities shared on:

Student Portal

A screenshot of the CE102 Course Announcement Page. The left sidebar has icons for Account, Dashboard, Courses, Calendar, Inbox, History, and Commons. The main content area is titled 'CE102 Course Announcement Page' and shows 'Published Courses (1)'. A course card for 'CE102: Foundations of Communit...' is displayed with a 'WELCOME TO CE102' graphic. Below the card is a link: bit.ly/3qRJgfp. A notification bubble says 'Welcome! How can I help you?' with a '31' indicator.

Enrolling in CE102 course gives you access to sustained project opportunities!

2A

Interested Volunteer

Ad-hoc volunteering opportunities



Certificate of Participation

2B

Seasoned Volunteer

Being involved in a sustained project
OR
Recruiting volunteers for an existing project



Certificate of Completion

HOW MIGHT
YOUR CE
JOURNEY
LOOK LIKE?

1

Interested Student

Complete CE102 Module on Canvas



Certificate of Attendance

2C

Community Enabler

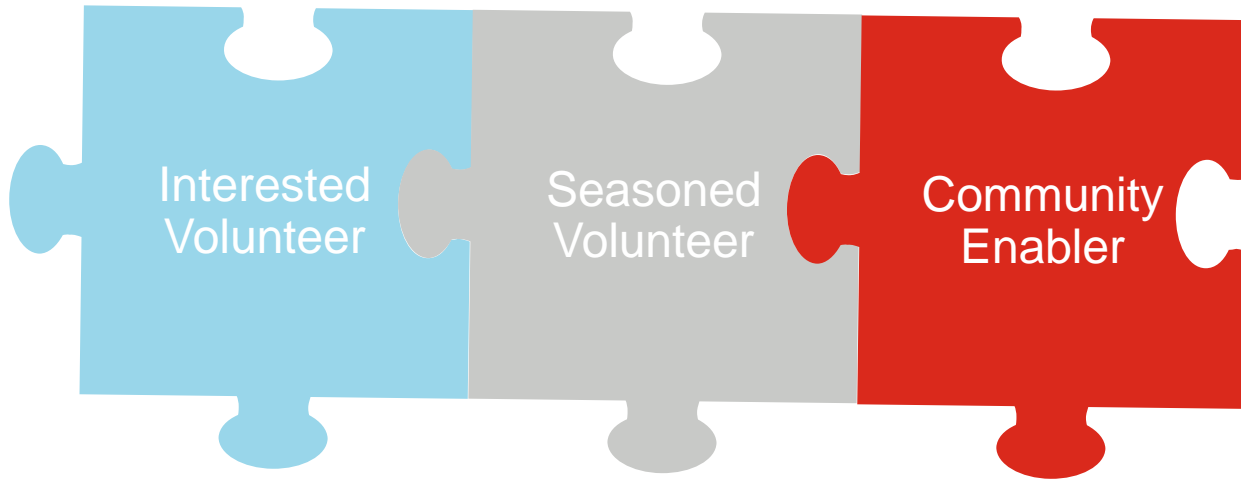
Collaborate with SUSS students
to further social good in the
social/non-profit/community sector



Certificate of Appreciation

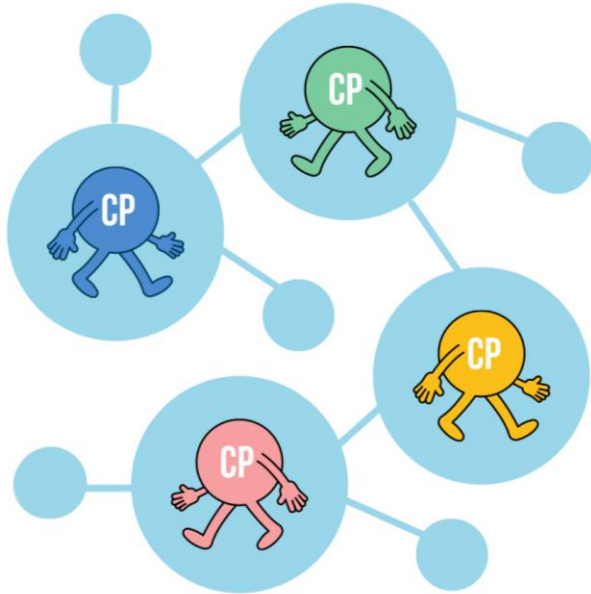
WAYS TO BE INVOLVED

Find the right fit with us.



COMMUNITY ENABLER

Mentor and collaborate with students to further social good.



- Staff of non-profits, social service agencies or social enterprises can mentor SUSS students on a CE initiative with your organisation
- Build collaboration and resource sharing between the university and your organisation for social good

2A

Interested Volunteer

Ad-hoc volunteering opportunities



Certificate of Participation

2B

Seasoned Volunteer

Being involved in a sustained project
OR
Recruiting volunteers for an existing project



Certificate of Completion

**Your Community Engagement(s) must
be documented in your E-Portfolio.**

1

Interested Student

Complete CE102 Module on Canvas



Certificate of Attendance

2C

Community Enabler

Collaborate with SUSS students
to further social good in the
social/non-profit/community sector



Certificate of Appreciation

INDICATE YOUR INTEREST AND REGISTER FOR CE102



CONTACT US

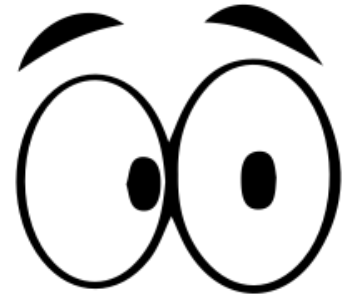
Stay connected.



osl@suss.edu.sg



<http://www.suss.edu.sg/oslce>



Look out for
updates via email
/ student portal!